

OR-T 231-C2FE

Automatic strapping press for palletized paper sheets



Customer benefits

Characteristics

Top compression 0,8–2 tons

Adjustable, electronically controlled strap tension

User-friendly control panel with push buttons and display

Robust and proven design with first class industrial components

Machine, strap and after-sales service as a total package

Customer benefits

- Compressed and strapped format paper provides a compact and safe load unit

- Maximum product securing during transportation due to balanced strap

- Easy operation
- Secure continuous duty

- High availability
- Low maintenance cost

- ORGAPACK – your solution provider

Machine

Strapping cycle time	Approx. 13 s per strap by pallet size W x L x H: 1200 x 1200 x 1600 mm	Conveying height	From 320 mm
Top compression	0,8–2 tons Adjustable by potentiometer, electronically controlled	Arch dimensions	See page 4
Strap tension	200–2200 N Adjustable by potentiometer, electronically controlled Floating head ensures equalised strap tension around package	Strap dispenser	Separate strap dispenser with accumulator
Press plate speed	Approx. 160 mm/s	Strap end	Automatic strap end detection
Sealing method	Heat weld sealing system for PP and PET, simple adjustment	Colours	Frame: Blue, RAL 5012 Movable parts: Yellow, RAL 1023 Control desk: Grey, RAL 7035
		Machine weight	Approx. 1800 kg

Conveyor

The conveying systems is not part of the OR-T 231-C2FE machine

Control system

Stand alone control desk

- The Man Machine Interface consists of
- Main switch and Emergency push button
 - Push button for various start functions
 - Selector switches for machine mode and program
 - Potentiometer for press power selection
 - Potentiometer for strap tension selection
 - Indicator lamps for machine on condition indication
 - Numerical display for machine condition indication

Standard strapping modes

- Service
- Manual
- Automatic
- Pass through

PLC Simatic S7-300

Interface, signal exchange

All signals for exchange must be potential free

The strapping machine is able to receive the following signals

- Start of the selected strapping program
- Confirmation: Conveyor not in motion
- External Emergency-Stop is activated
- External safety clear (light barriers, access door etc.)

The strapping machine sends the following signals

- Strapping program completed (automatic mode)
- Conveyor release
- Activated emergency-Stop on the strapping machine

Detailed description "Signal Exchange" available

Strap

Polyester (PET)	Width 12, 16, 19 mm Thickness 0,56–0,8 mm
Polypropylene (PP)	Width 12, 16, 19 mm Thickness 0,7–0,85 mm
Core size	Ø 406 mm Width 152 mm

Features



Simple operation

User friendly control panel



Numerical display for machine condition indication



Segmented track system

Strap infeed at all heights possible



Maximum product securing during transportation

Adjustable top press power and strap tension, electronically controlled, floating head for balanced strap tension around the package



Long life cycle and low maintenance cost

First class industrial components, e.g. SEW motors, powered by frequency controller for fast movement and precise control

Options

Top compression 1–3 tons

Machine OR-T 231-C2FE

Min. package height 200 mm (incl. pallet)

For machine with sword, instead of min. 450 mm

Max. package height 2350 mm (incl. pallet)

Instead of max. 1350 or 1850 mm

Pack pre-height detection

For faster strapping of pallets with different heights

Sword with knives

For cutting the folio



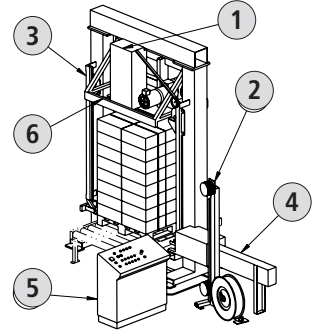
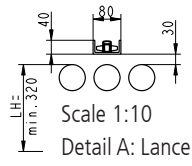
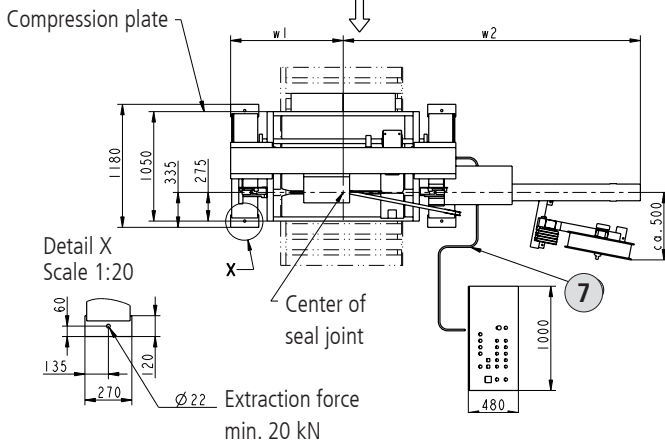
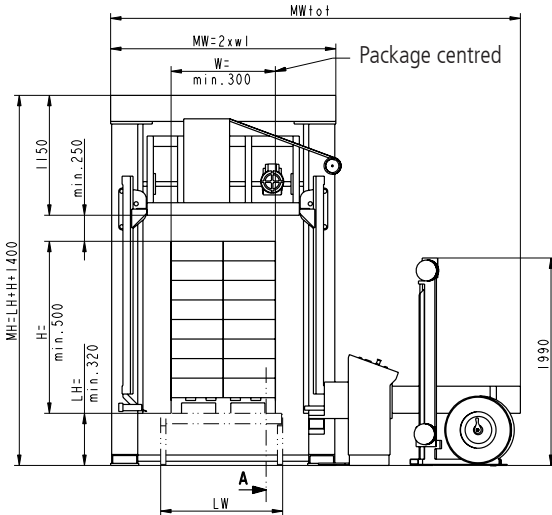
Strap end pre-warning

To ensure short machine downtimes when changing coils



Flash light

General fault signal with indicator lamp



- 1 Strapping head for high strap tension, operational reliability and easy maintenance
- 2 Strap dispenser with accumulator
- 3 Telescope strap guide
- 4 Lance with friction drive, adjustable height ± 15 mm
- 5 Control system with programmable controller
- 6 Compression force 8–20 kN
- 7 Cable length standard: 3 m (optional ... m according order)

Largeur

Standard	W	MW total	w1	w2
W12	1250	4530	1180	3350
W14	1450	4930	1280	3650
W16	1650	5330	1380	3950

ORGAPACK GmbH
Packaging Technology

Silbernstrasse 14
CH-8953 Dietikon
Phone +41 44 745 50 50
Fax +41 44 745 52 16
pt@orgapack.com
www.orgapack.com

Zertifikat ISO 9001 / EN 29001