

OR-T 231-C4F-R

Automatic strapping machine for paper rolls



Customer benefits

Characteristics

Pneumatically powered strap guide arms

Adjustable, electronically controlled strap tension

User-friendly control panel with push buttons and display

Robust and proven design with first class industrial components

Machine, strap and after-sales service as a total package

Customer benefits

- Exact strap positioning on the paper roll

- Maximum product securing during transportation thanks to balanced strap tension around the paper roll

- Easy operation
- Secure continuous duty

- High availability
- Low maintenance cost

- ORGAPACK – your solution provider

Machine

Strapping cycle time	Approx. 14 s per strap (roll Ø 1800 mm)
Strap tension	200–2200 N Adjustable by potentiometer, electronically controlled
Carriage vertical speed	Approx. 160 mm/s
Sealing method	Heat weld sealing system for PET, simple adjustment
Conveying height	0 mm, floor level (other height on request)
Arch dimension	For paper roll Ø 800–1800 mm: 1800 mm
Strap guide arms	Pneumatically powered

Strap dispenser	Separate strap dispenser with accumulator
Strap end	Automatic strap end detection
Colours	Frame: Blue, RAL 5012 Movable parts: Yellow, RAL 1023 Control desk: Grey, RAL 7035
Electrical supply	400 VAC, 50 Hz, 3PE Rated power 2,5 kW
Compressed air	5–6 bar Consumption: 7 NI per strap cycle
Machine weight	Approx. 1200 kg

Conveyor

The conveying systems is not part of the OR-T 231-C4F-R machine

Control system

Stand alone control desk

The Man Machine Interface consists of

- Main switch and Emergency push button
- Push button for various start functions
- Selector switches for machine mode and program
- Potentiometer for strap tension selection
- Indicator lamps for machine on condition indication
- Numerical display for machine condition indication

Standard strapping modes

- Service
- Manual
- Automatic
- Pass through

PLC Simatic S7-300

Interface, signal exchange

All signals for exchange must be potential free

The strapping machine is able to receive the following signals

- Start of the selected strapping program
- Confirmation: Conveyor not in motion
- External Emergency-Stop is activated
- External safety clear (light barriers, access door etc.)

The strapping machine sends the following signals

- Strapping program completed (automatic mode)
- Conveyor release
- Activated emergency-Stop on the strapping machine

Detailed description "Signal Exchange" available

Strap

Polyester (PET)	Width	12–13, 16 mm
	Thickness	0,56–0,8 mm
Core size	Ø	406 mm
	Width	152 mm

Features



Simple operation
User friendly control panel



Numerical display for
machine condition
indication



**Pneumatically powered
strap guide arms**

Exact strap positioning on
the paper roll



**Segmented
track system**

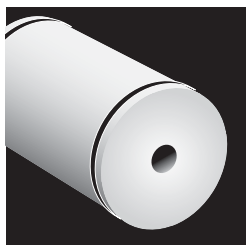
Strap infeed at all heights
possible



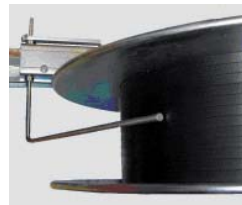
**Long life cycle and
low maintenance cost**

First class industrial
components, e.g. SEW
motors, powered by
frequency controller for
fast movement and precise
control

Options



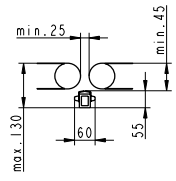
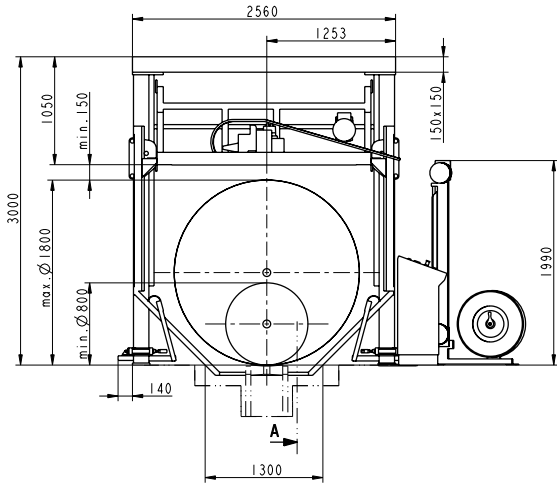
Special paper roll Ø
Min. 600 mm
or
800–2100 mm



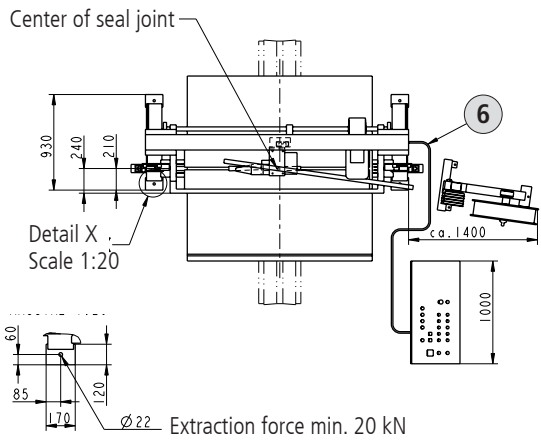
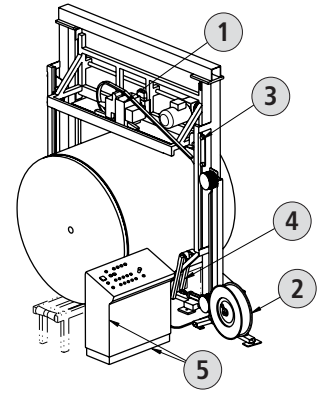
Strap end pre-warning
To ensure short machine
downtimes when changing
coils



Flash light
General fault signal with
indicator lamp



Detail A: Strap guide



- 1 Strapping head for high strap tension, operational reliability and easy maintenance
- 2 Strap dispenser with accumulator
- 3 Telescope strap guide
- 4 Guide arms for exact strap positioning
- 5 Control system with programmable controller
- 6 Cable length standard: 3 m (optional ... m according order)

ORGAPACK GmbH
Packaging Technology

Silberstrasse 14
CH-8953 Dietikon
Phone +41 44 745 50 50
Fax +41 44 745 52 16
pt@orgapack.com
www.orgapack.com

Certificate ISO 9001 / EN 29001